

DIMENSIONAL PRINT: 56° STEEL ALTERNATING TREAD STAIR WITH STANDARD HANDRAILS

VARIABLE DIMENSIONS

① SPECIFIED STAIR HEIGHT

CALCULATED BASED ON HEIGHT:

② HORIZONTAL RUN

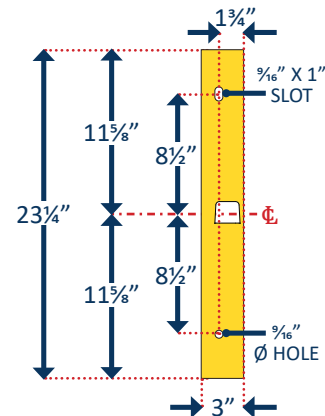
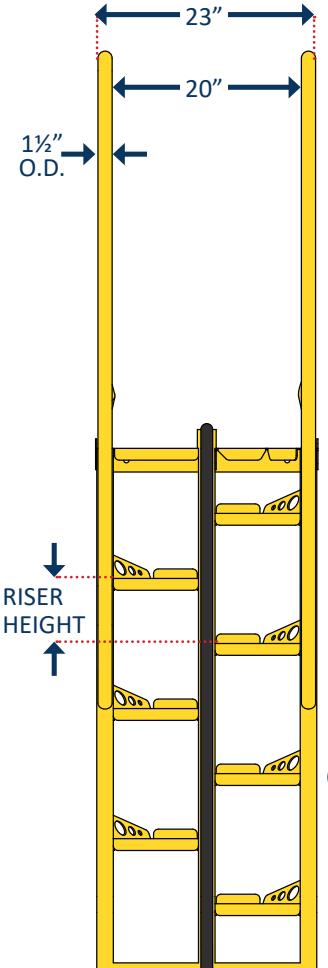
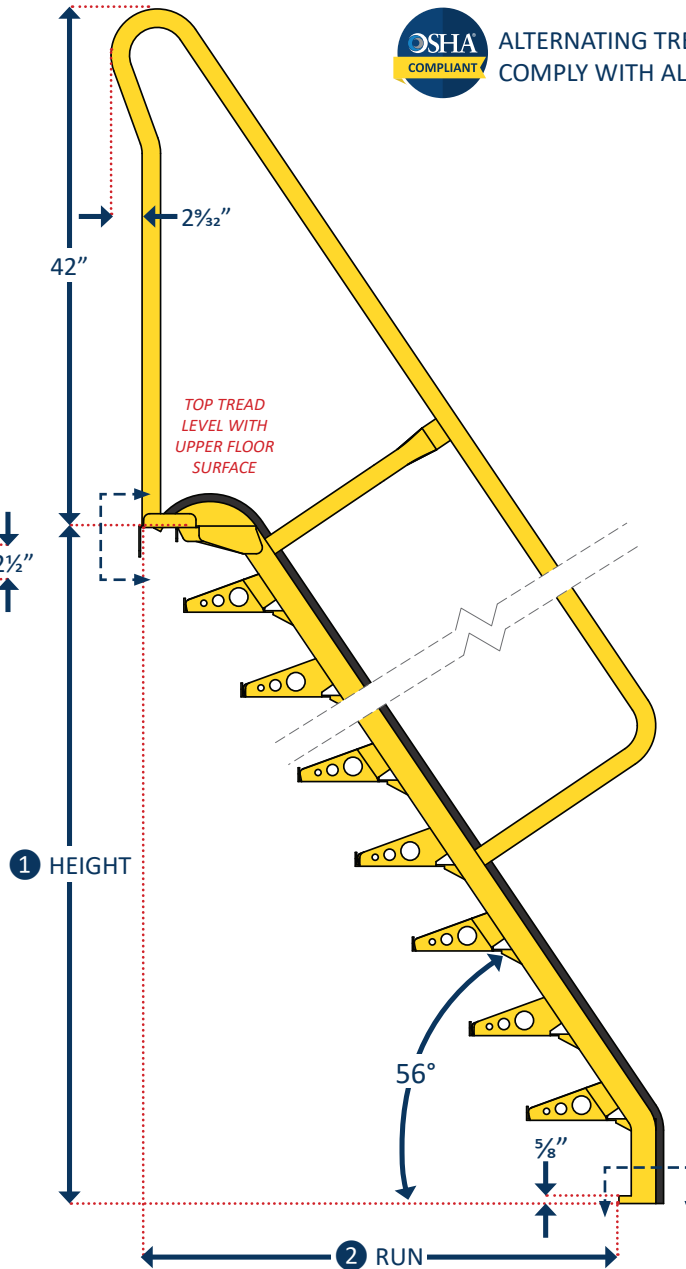
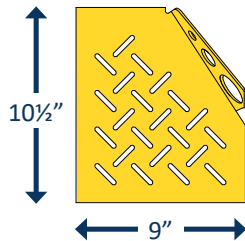
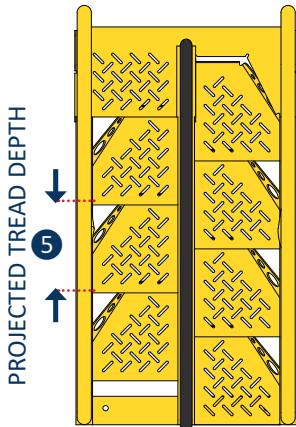
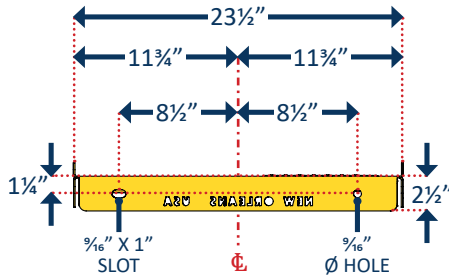
③ RISER HEIGHT

④ NUMBER OF RISERS

⑤ PROJECTED TREAD DEPTH



ALTERNATING TREAD STAIRS ARE DESIGNED TO COMPLY WITH ALL APPLICABLE OSHA STANDARDS



FOR STAIR HEIGHTS 15' AND UP

Lapeyre Stair recommends an intermediate platform with two stairs of equal heights. Sway bracing may be required to reduce vibration.